

+4.57 ACRES - CONTRACTOR'S YARD, TRUCKING FACILITY FOR SALE

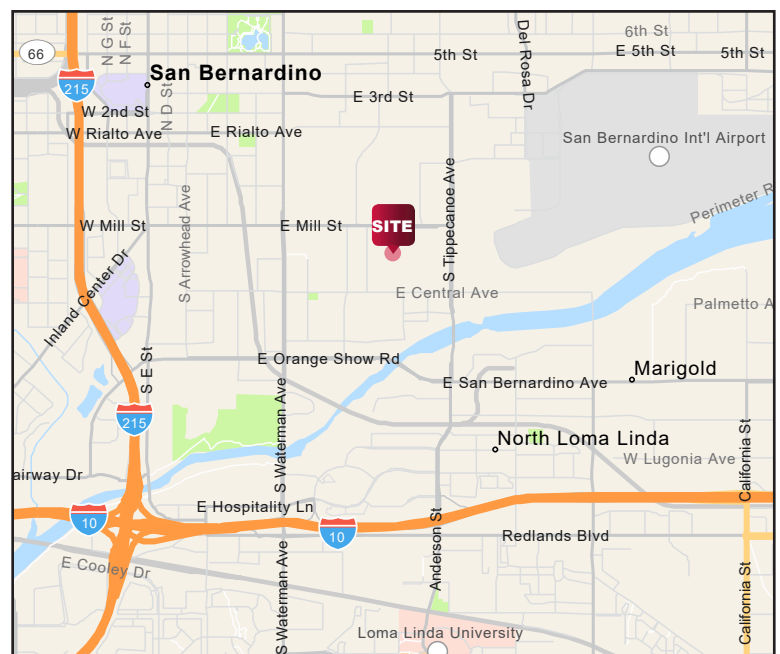
POTENTIAL DEVELOPMENT FOR ±80,076 SF WAREHOUSE

841 & 879 E Santa Fe Street, San Bernardino, CA 92408



PROPERTY HIGHLIGHTS

- ±4.57 AC - Contractor's Yard, Trucking Facility (Verify all uses with the City of San Bernardino)
- Multiply Structures on Site
- IL - (Industrial Light) Zoning
- Potential Development for ±80,076 SF Warehouse (see site plan)
- Lot Dimensions 310 x 515 FT
- Fully Fenced & Secured Yard
- Close Proximity to 215/10 Freeway



TRENT KIMSEY

951.276.3649 | DRE#: 02066678

TKIMSEY@LEERIVERSIDE.COM

ALEXEY ZABOLTSKIKH

951.276.3606 | DRE#: 01428540

ALEX@LEERIVERSIDE.COM

CRAIG YOCUM

951.276.3625 | DRE#: 00942165

CYOCUM@LEERIVERSIDE.COM

3240 Mission Inn Avenue, Riverside, CA 92507 | 951.276.3600 | Corporate DRE#: 01048055 | www.lee-associates.com

No warranty or representation has been made to the accuracy of the foregoing information. Terms of sale or lease and availability are subject to change or withdrawal without notice. Lee & Associates Commercial Real Estate Services, Inc. - Riverside.

+4.57 ACRES - CONTRACTOR'S YARD, TRUCKING FACILITY FOR SALE

POTENTIAL DEVELOPMENT FOR ±80,076 SF WAREHOUSE

841 & 879 E Santa Fe Street, San Bernardino, CA 92408



PARCEL MAP

[CLICK HERE](#)
San Bernardino
Zoning Map

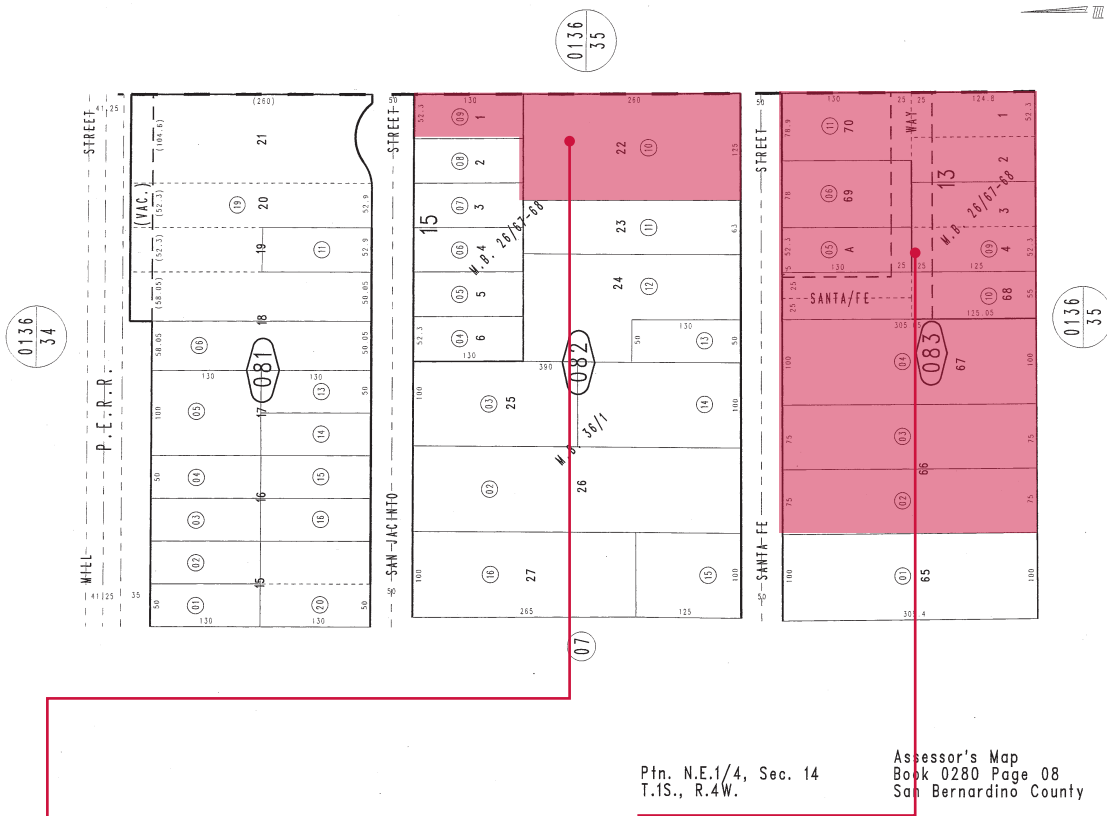
[CLICK HERE](#)
San Bernardino
Specific Plan

THIS MAP IS FOR THE PURPOSE
OF AD VALOREM TAXATION ONLY.



Ptn. Tract No. 1846, Gifford Park, M.B. 26/67-68
Ptn. Tract No. 2505, Gifford Comstock, M.B. 36/1

City of San Bernardino 0280-0
Tax Rate Area
7007



January 2005

Ptn. N.E.1/4, Sec. 14
T.1S., R.4W.

Assessor's Map
Book 0280 Page 08
San Bernardino County

APN's
0280-082-10 0.75 Acres
0280-082-09 0.16 Acres

APN's
0280-083-11 0.62 Acres
0280-083-06 0.28 Acres
0280-083-09 0.34 Acres
0280-083-05 0.19 Acres
0280-083-10 0.39 Acres
0280-083-04 0.7 Acres
0280-083-03 0.53 Acres
0280-083-02 0.53 Acres



TRENT KIMSEY
951.276.3649 | DRE#: 02066678
TKIMSEY@LEERIVERSIDE.COM

ALEXEY ZABOLOTSKIKH
951.276.3606 | DRE#: 01428540
ALEX@LEERIVERSIDE.COM

CRAIG YOCUM
951.276.3625 | DRE#: 00942165
CYOCUM@LEERIVERSIDE.COM

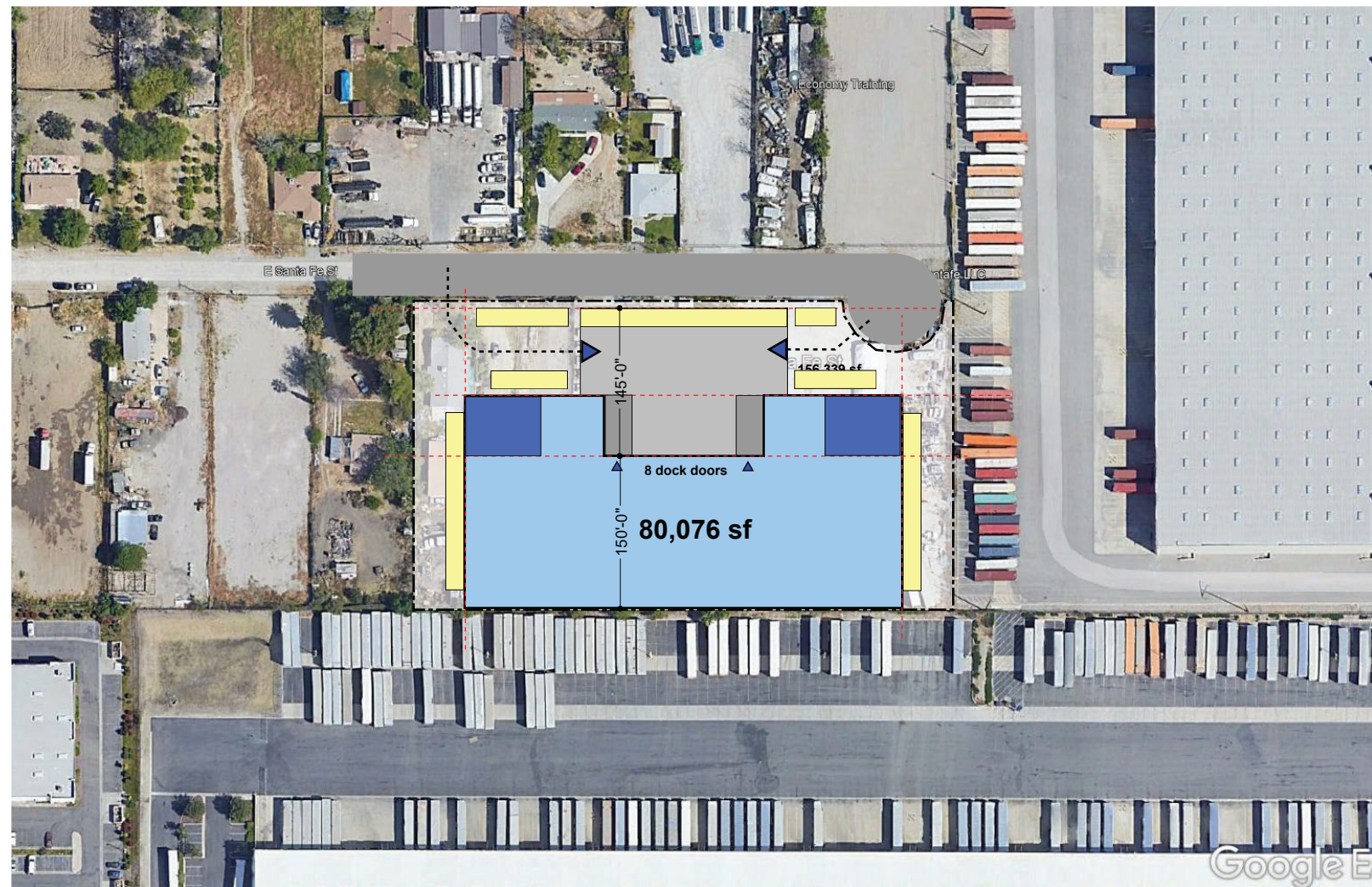
+4.57 ACRES - CONTRACTOR'S YARD, TRUCKING FACILITY FOR SALE

POTENTIAL DEVELOPMENT FOR ±80,076 SF WAREHOUSE

841 & 879 E Santa Fe Street, San Bernardino, CA 92408



CONCEPTUAL SITE PLAN



TRENT KIMSEY
951.276.3649 | DRE#: 02066678
TKIMSEY@LEERIVERSIDE.COM

ALEXEY ZABOLOTSKIKH
951.276.3606 | DRE#: 01428540
ALEX@LEERIVERSIDE.COM

CRAIG YOCUM
951.276.3625 | DRE#: 00942165
CYOCUM@LEERIVERSIDE.COM

3240 Mission Inn Avenue, Riverside, CA 92507 | 951.276.3600 | Corporate DRE#: 01048055 | www.lee-associates.com

No warranty or representation has been made to the accuracy of the foregoing information. Terms of sale or lease and availability are subject to change or withdrawal without notice. Lee & Associates Commercial Real Estate Services, Inc. - Riverside.

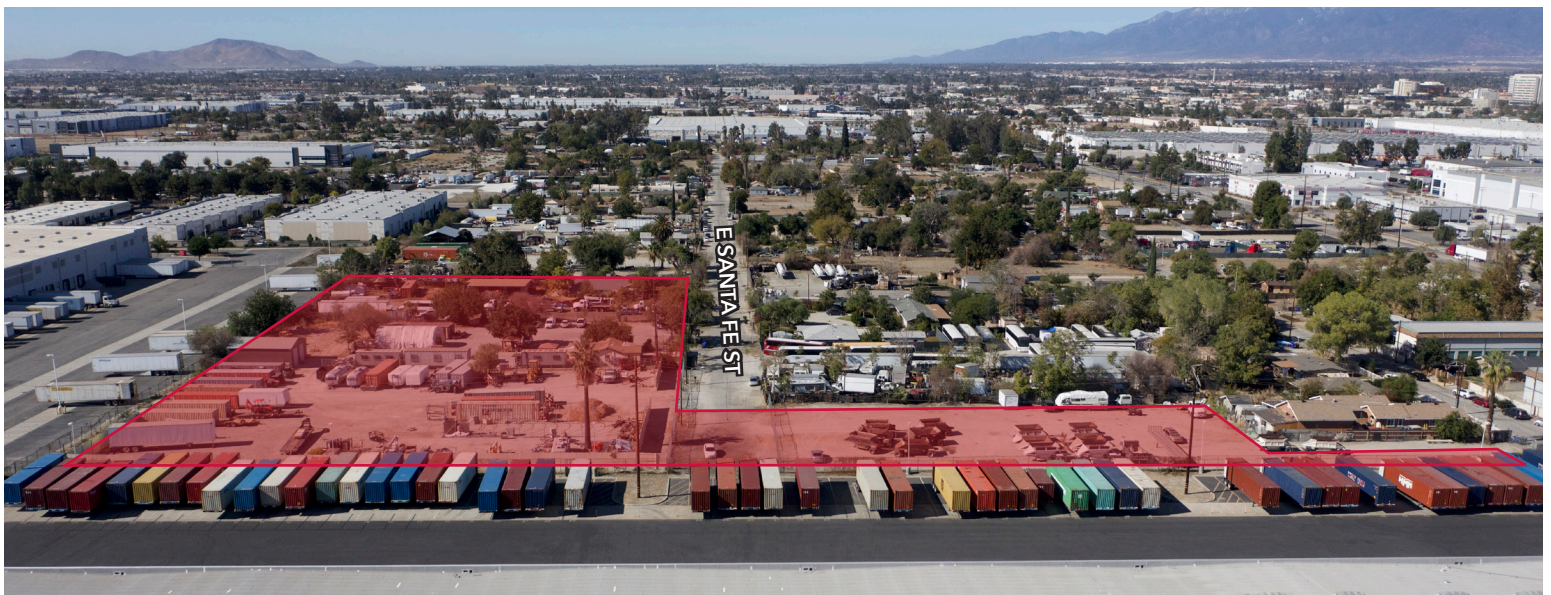
+4.57 ACRES - CONTRACTOR'S YARD, TRUCKING FACILITY FOR SALE

POTENTIAL DEVELOPMENT FOR ±80,076 SF WAREHOUSE

841 & 879 E Santa Fe Street, San Bernardino, CA 92408



AERIAL



TRENT KIMSEY
951.276.3649 | DRE#: 02066678
TKIMSEY@LEERIVERSIDE.COM

ALEXEY ZABOLOTSKIKH
951.276.3606 | DRE#: 01428540
ALEX@LEERIVERSIDE.COM

CRAIG YOCUM
951.276.3625 | DRE#: 00942165
CYOCUM@LEERIVERSIDE.COM

3240 Mission Inn Avenue, Riverside, CA 92507 | 951.276.3600 | Corporate DRE#: 01048055 | www.lee-associates.com

No warranty or representation has been made to the accuracy of the foregoing information. Terms of sale or lease and availability are subject to change or withdrawal without notice. Lee & Associates Commercial Real Estate Services, Inc. - Riverside.