

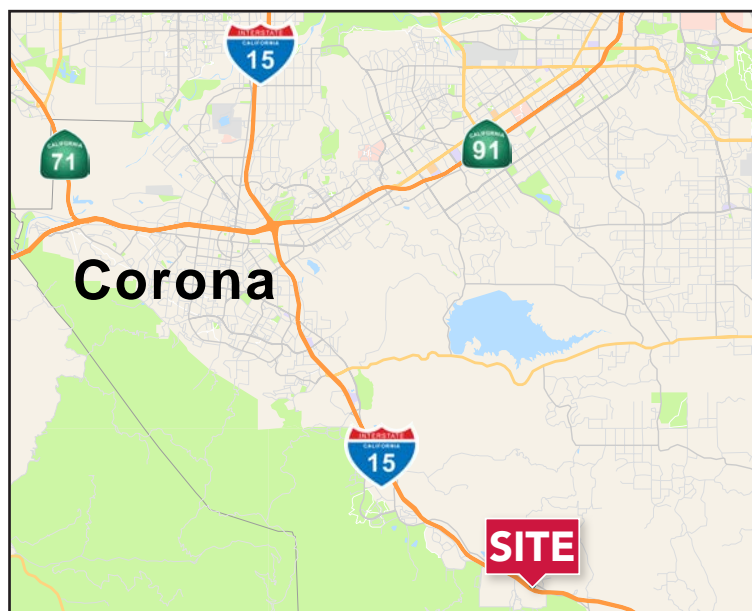
FOR LEASE ±1.12 ACRE CONTRACTORS/TRUCKING YARD

26375 Earthmover Circle, Corona CA 92883



PROPERTY HIGHLIGHTS

- ±1.12 Acre Truck Yard/ Contractors Yard
(Verify Uses with City of Corona)
- Fenced & Secured Yard
- Freeway Visibility
- Close Proximity to 15 Freeway
- Zoning: M-SC *(verify)*
- Land Use Designation Light Industrial *(Verify with County of Riverside)*



CRAIG YOCUM

951.276.3625 // DRE#: 00942165
CYOCUM@LEERIVERSIDE.COM

MATHEW GRAVES

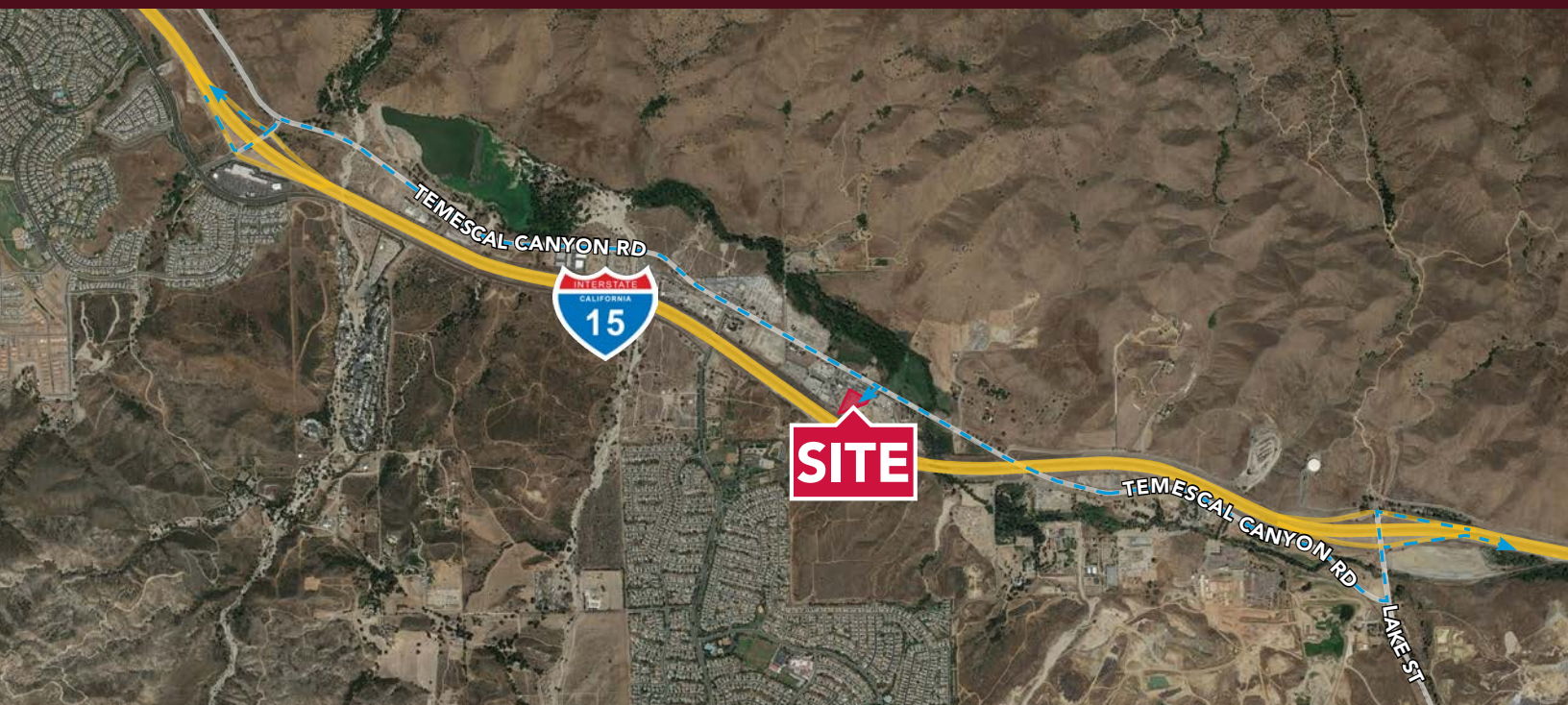
951.276.3601 // DRE#: 02152178
MGRAVES@LEERIVERSIDE.COM

LEE & ASSOCIATES
COMMERCIAL REAL ESTATE SERVICES

FOR LEASE

±1.12 ACRE CONTRACTORS/TRUCKING YARD

26375 Earthmover Circle, Corona CA 92883



CRAIG YOCUM

951.276.3625 // DRE#: 00942165
CYOCUM@LEERIVERSIDE.COM

MATHEW GRAVES

951.276.3601 // DRE#: 02152178
MGRAVES@LEERIVERSIDE.COM

LEE & ASSOCIATES
COMMERCIAL REAL ESTATE SERVICES

3240 Mission Inn Avenue, Riverside, CA 92507 | 951.276.3600 | Corporate DRE#: 01048055 | www.lee-associates.com

No warranty or representation has been made to the accuracy of the foregoing information. Terms of sale or lease and availability are subject to change or withdrawal without notice. Lee & Associates Commercial Real Estate Services, Inc. - Riverside.